



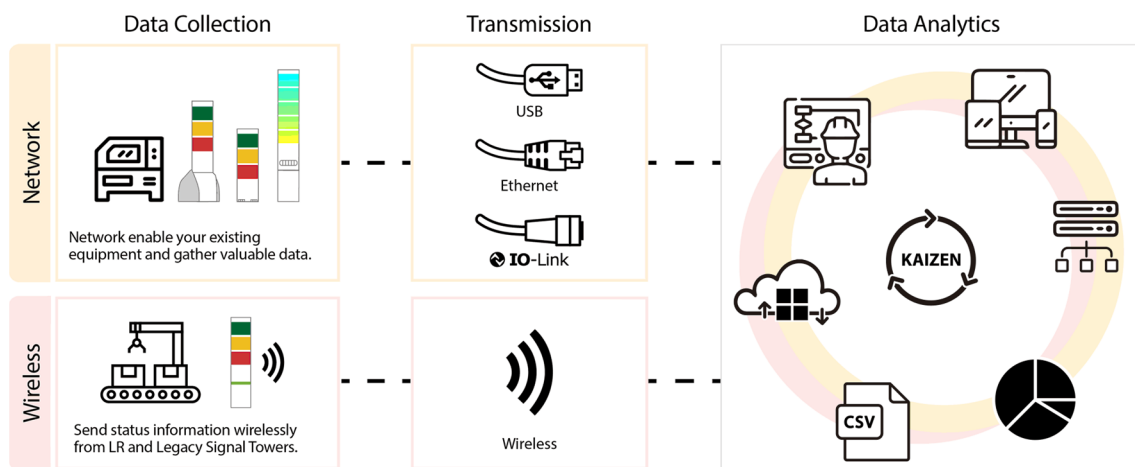
# MEGASENSOR

## PRODUTOS EM FOCO

### IoT – Internet of things – Internet das coisas

Já estamos habituados com dezenas de aplicativos em nossos aparelhos celulares que nos permitem pedir transporte, comida, bebida e uma série de *FACILIDADES*.

Não demorou muito e estas mesmas *FACILIDADES* chegaram aos mais diversos processos produtivos.



As *REDUÇÕES DE CUSTOS* são expressivas.

Por exemplo, um Diretor estabelecido na matriz no Japão, pode facilmente verificar o desempenho produtivo de sua filial estabelecida em outro país. Não é necessário se deslocar.

Outro exemplo: o Gerente de Manutenção pode receber um e-mail, gerado por uma célula de produção, informando sobre um status que requer uma ação imediata. Até esta ação pode ser ativada pelo smartphone.

Toda esta *TECNOLOGIA* direcionada para a *EFICIÊNCIA PRODUTIVA*.

[www.patlite.com](http://www.patlite.com)

[www.qlight.com](http://www.qlight.com)

MEGA SP Comércio de Sensor Eireli – ME  
Endereço: Rua Liliental, 247 – Bairro Parque Edu Chaves  
CEP 02231-000 – São Paulo – SP – Brasil  
Telefone: 11-3938-5313 – Mobile/WhatsApp: 11-97162-7722  
E-mail: vendas@megasensor.com.br



# MEGASENSOR

## PRODUTOS EM FOCO

### IoT Screw Driver Measures Tightness of Screws

**System example**

WDT-LR-Z2 Transmitter

Electric screwdriver

WDR Receiver  
Possible to use 1 receiver with up to 20 transmitters

LAN

Save to PC in CSV format.

Easily process data in Excel.

• Example CSV data

	Electric screwdriver label	Start	Increase Torque	Reverse	Not used		
3	Date/Time	MAC Address	User name	Red information	Amber information	Green information	Blue information
4	2017/7/20 15:00:47	58C232FFFE20FFC3	Cell_1	0	0	0	0
5	2017/7/20 15:00:51	58C232FFFE20FFC3	Cell_1	1	0	0	0
6	2017/7/20 15:00:52	58C232FFFE20FFC3	Cell_1	1	1	0	0
7	2017/7/20 15:00:52	58C232FFFE20FFC3	Cell_1	1	0	0	0
8	2017/7/20 15:00:52	58C232FFFE20FFC3	Cell_1	0	0	0	0

0: OFF, 1: ON

**Caution**

- WD can collect the start, increase torque, and reverse signals only. (WD cannot use the stop signal from an electric screwdriver.)
- An electric screwdriver signal cannot turn on an LED lamp of the LR series.

PoE	Mirroring	Modbus /TCP
HTTP	Ethernet	85dB (at 1 m)
11 sounds	LED 21Color	IP54

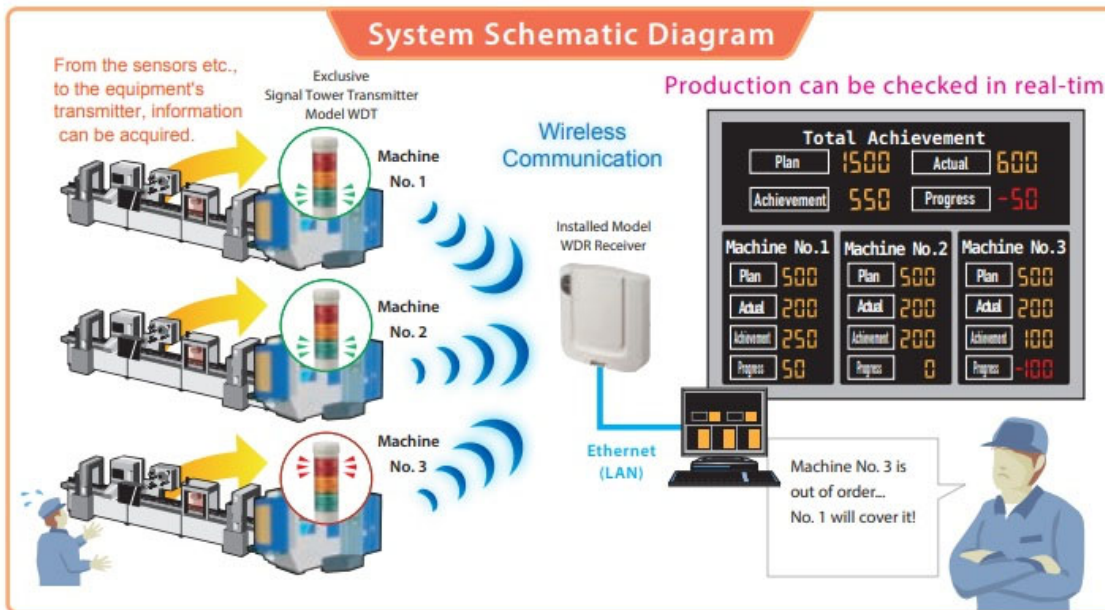
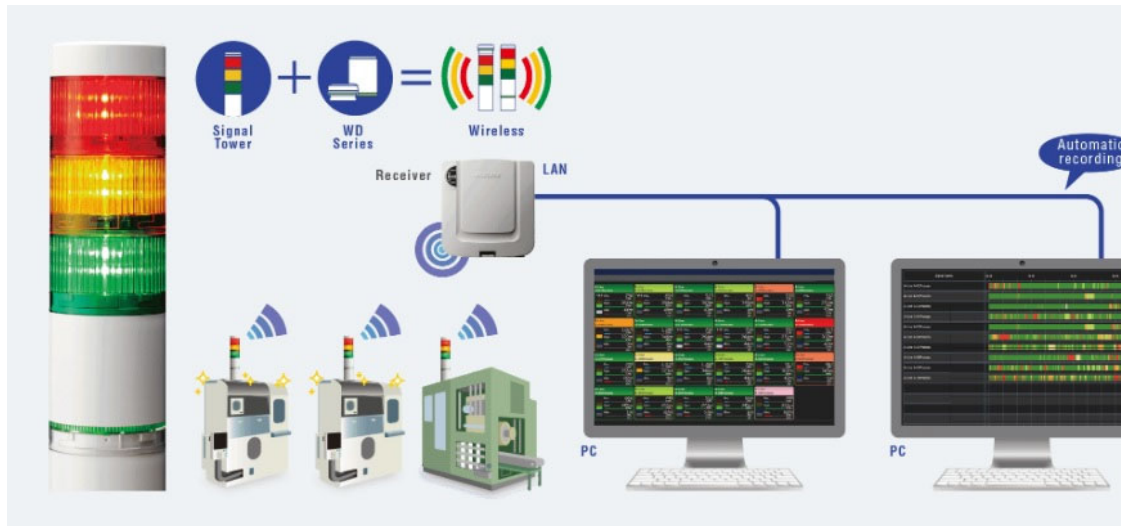
\*Direct Mount

MEGA SP Comércio de Sensor Eireli – ME  
 Endereço: Rua Liliental, 247 – Bairro Parque Edu Chaves  
 CEP 02231-000 – São Paulo – SP – Brasil  
 Telefone: 11-3938-5313 – Mobile/WhatsApp: 11-97162-7722  
 E-mail: vendas@megasensor.com.br



# MEGASENSOR

## PRODUTOS EM FOCO

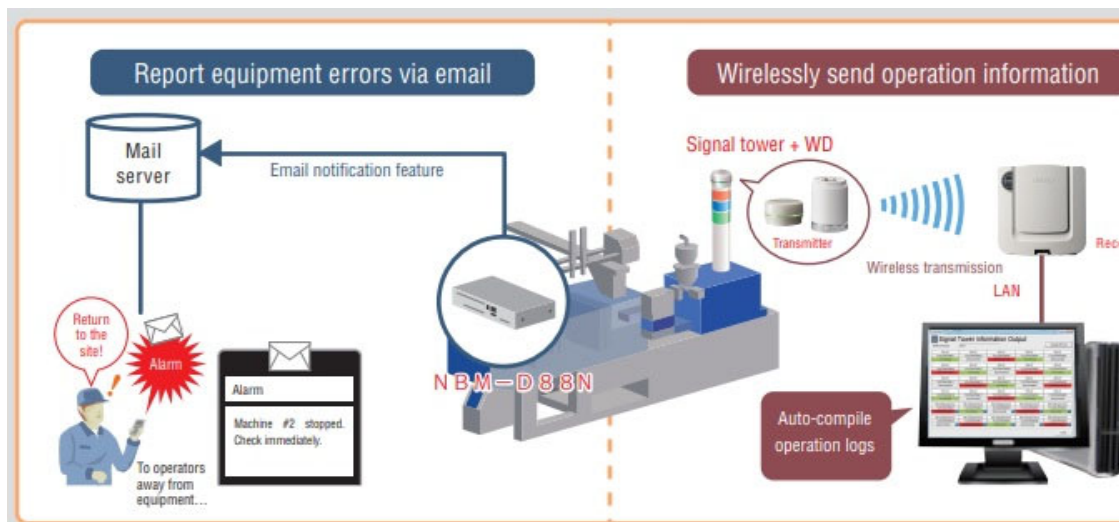
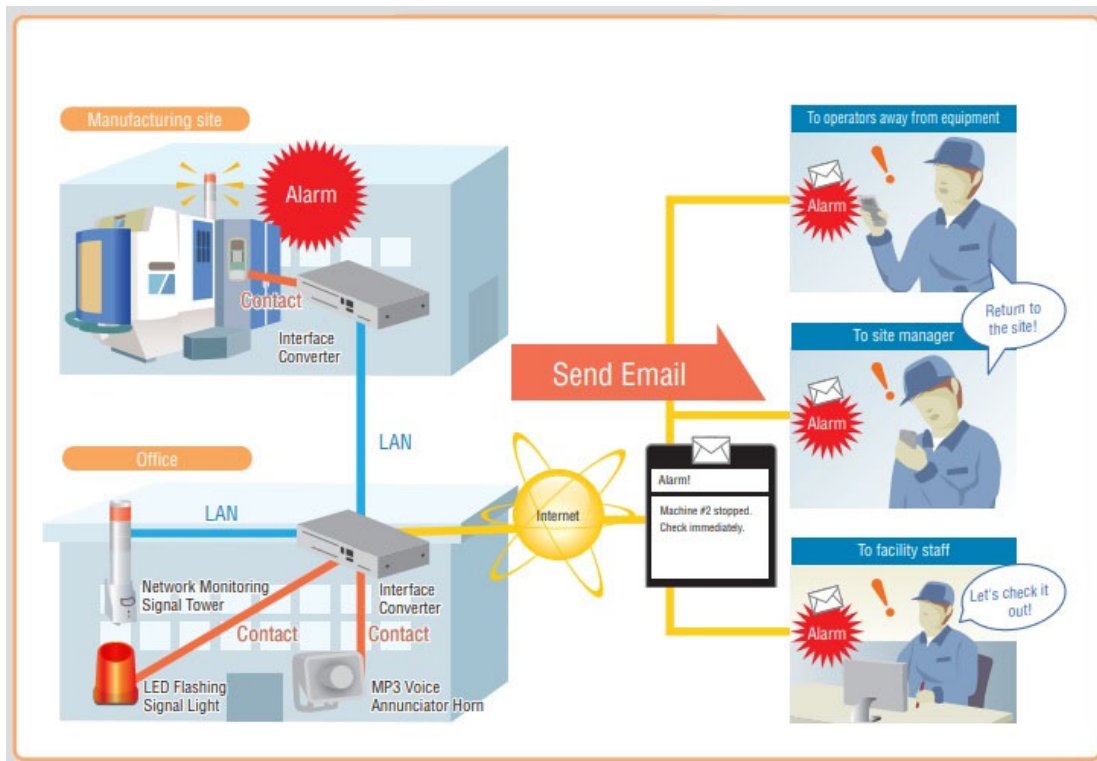


MEGA SP Comércio de Sensor Eireli – ME  
 Endereço: Rua Liliental, 247 – Bairro Parque Edu Chaves  
 CEP 02231-000 – São Paulo – SP – Brasil  
 Telefone: 11-3938-5313 – Mobile/WhatsApp: 11-97162-7722  
 E-mail: vendas@megasensor.com.br



# MEGASENSOR

## PRODUTOS EM FOCO

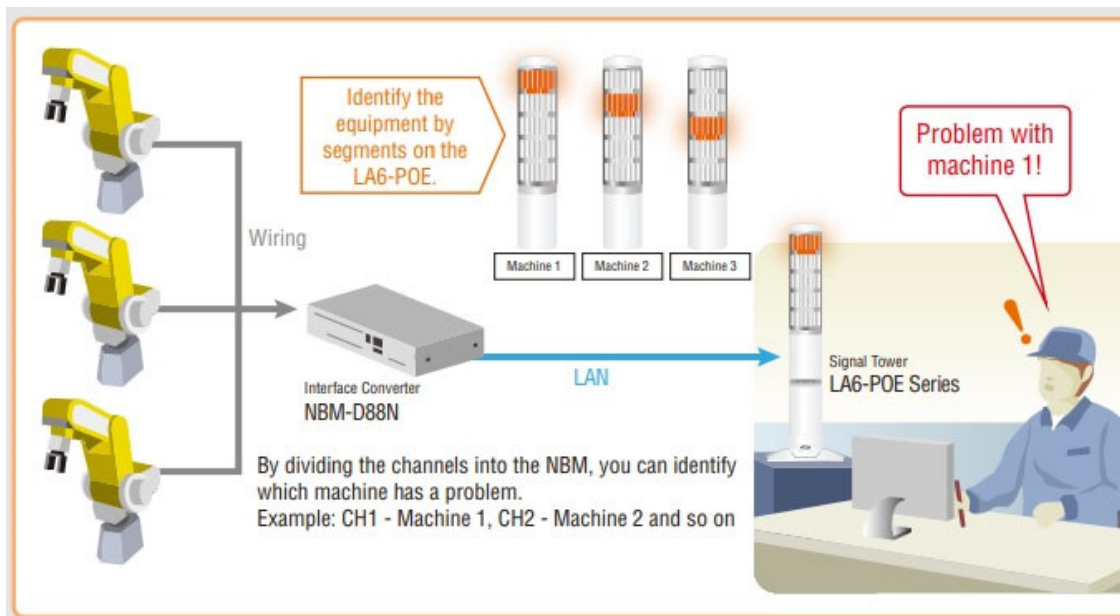
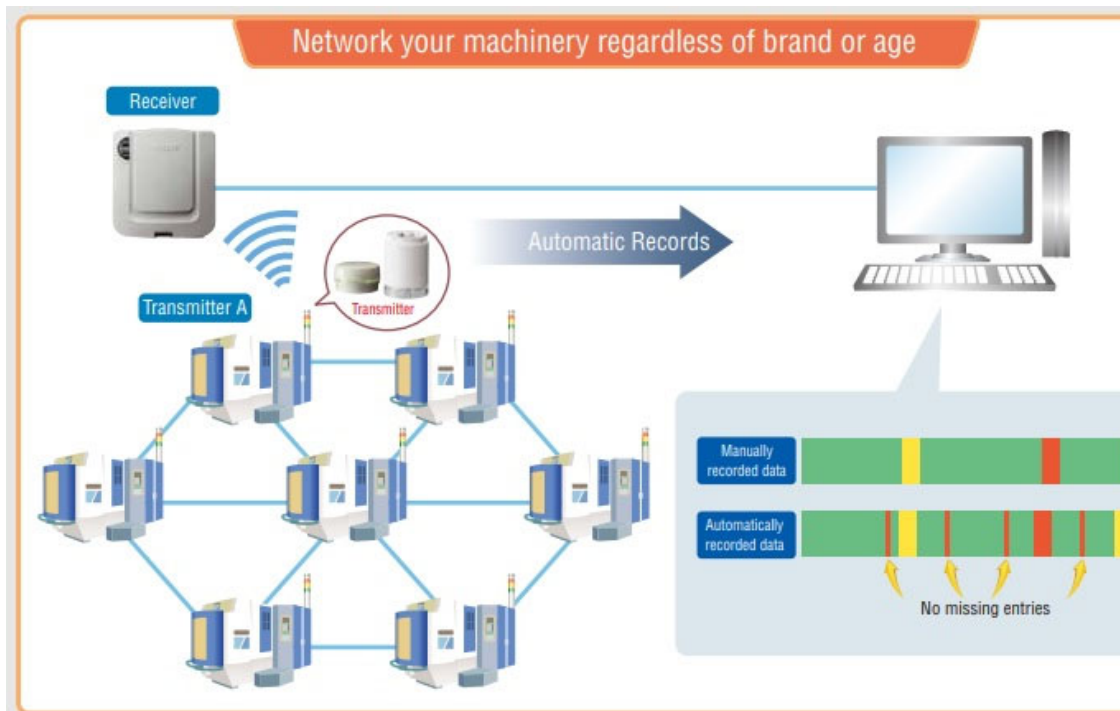


MEGA SP Comércio de Sensor Eireli – ME  
Endereço: Rua Liliental, 247 – Bairro Parque Edu Chaves  
CEP 02231-000 – São Paulo – SP – Brasil  
Telefone: 11-3938-5313 – Mobile/WhatsApp: 11-97162-7722  
E-mail: vendas@megasensor.com.br



# MEGASENSOR

## PRODUTOS EM FOCO



MEGA SP Comércio de Sensor Eireli – ME  
Endereço: Rua Liliental, 247 – Bairro Parque Edu Chaves  
CEP 02231-000 – São Paulo – SP – Brasil  
Telefone: 11-3938-5313 – Mobile/WhatsApp: 11-97162-7722  
E-mail: vendas@megasensor.com.br



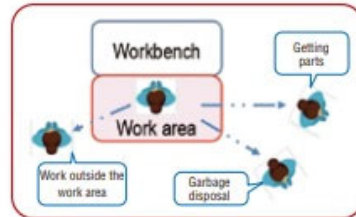
# MEGASENSOR PRODUTOS EM FOCO

## Example system

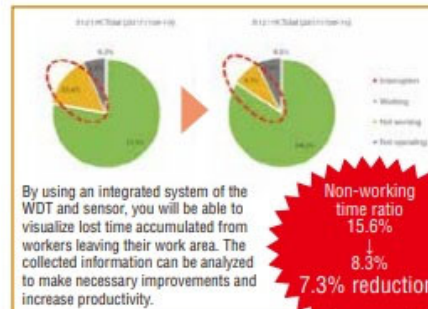


PATLITE Sanda Factory Example

Issue: Cannot see accumulation of lost time



### Mechanisms for Visualizing Lost Time



MEGA SP Comércio de Sensor Eireli – ME  
Endereço: Rua Liliental, 247 – Bairro Parque Edu Chaves  
CEP 02231-000 – São Paulo – SP – Brasil  
Telefone: 11-3938-5313 – Mobile/WhatsApp: 11-97162-7722  
E-mail: vendas@megasensor.com.br

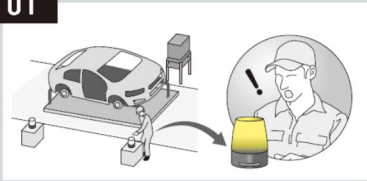


# MEGASENSOR PRODUTOS EM FOCO

## IO-Link x **PATLITE**

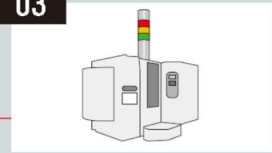
IO-Link is an open-standard protocol that enables bi-directional data communication between devices and the master. Incorporate PATLITE signal devices into IO-Link to facilitate and enhance manufacturing processes.

### Solution 01 Automotive Production Line



Call for parts and notify managers of issues.

### Solution 03 Various Industrial Equipment



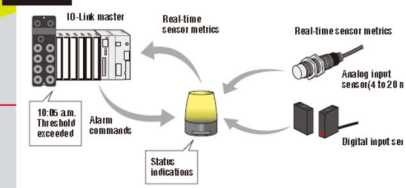
Reduce wiring costs and device setup time.

### Solution 02 Food and Beverage Production Line



Acquire real-time equipment status and collect operational metrics.

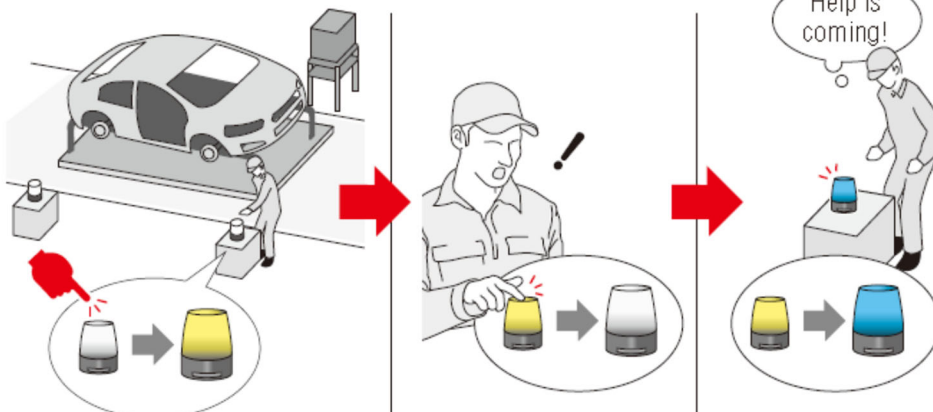
### Solution 04 Devices Not Compatible with IO-Link



Enables integration of non-compatible devices into IO-Link.

## Solution 01 Automotive Production Line

### Call for parts or request assistance with a single touch



When an issue arises, the personnel at the production site touches the NE-IL to activate the visual and audible alarms of the NE-IL at the manager's site.

The manager instantly notices the alarms, and determines where and what the issue is according to the illuminated color. The manager can touch the NE-IL to send notification back to the production site to indicate that help is on the way.

**MEGA SP Comércio de Sensor Eireli – ME**  
Endereço: Rua Liliental, 247 – Bairro Parque Edu Chaves  
CEP 02231-000 – São Paulo – SP – Brasil  
Telefone: 11-3938-5313 – Mobile/WhatsApp: 11-97162-7722  
E-mail: vendas@megasensor.com.br



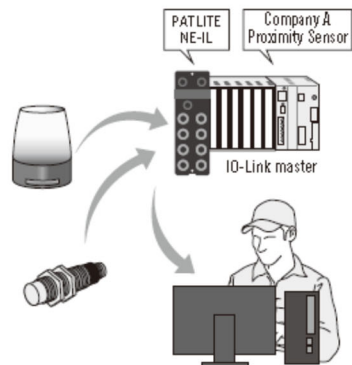
# MEGASENSOR

## PRODUTOS EM FOCO

Solution  
**02**

### Food and Beverage Production Line

#### Anticipate issues and enhance predictive maintenance



The IO-Link master acquires real-time operational data of the sensors and other devices that are connected. This data can be monitored remotely, and collected for further analysis.



When device abnormalities such as water or dust obstruction is detected, the IO-Link master sends commands to the LRS-IL Signal Tower to activate its visual and audible alarms to indicate the specific problem. Identify device issues before it happens to avoid equipment malfunctions and halts in production.

**MEGA SP Comércio de Sensor Eireli – ME**  
Endereço: Rua Liliental, 247 – Bairro Parque Edu Chaves  
CEP 02231-000 – São Paulo – SP – Brasil  
Telefone: 11-3938-5313 – Mobile/WhatsApp: 11-97162-7722  
E-mail: vendas@megasensor.com.br